

# California Biotech and Pharma Cluster:

*Tips for Professional Networking in California  
&  
Upsides and Downsides of Living in Los Angeles*

**Je Min Yoo, Ph.D.**

CEO/COO

BIOGRAPHENE

## “Innovative **Graphene-Based Nanomedicine** to treat **Neurodegenerative Diseases**”

### Core Technology

**Graphene-Based Nanomedicine**  
*Graphene Quantum Dots*

### Target Indications

- Parkinson's Disease
- Niemann-Pick Type C
- Alzheimer's Disease



# Why the United States?



- U.S pharma market accounts for ~43.72% of the global market

# Why the United States?



식품의약품안전처

Ministry of Food and Drug Safety

## Nanotechnology Guidelines

- In-person meeting with an official (Feb 8, 2018).
- No regulatory guidelines on nanoparticle-based pharma products.
- Recommended to consult with the US FDA for potential approval.



## Nanotechnology Overview

Mar 23, 2018

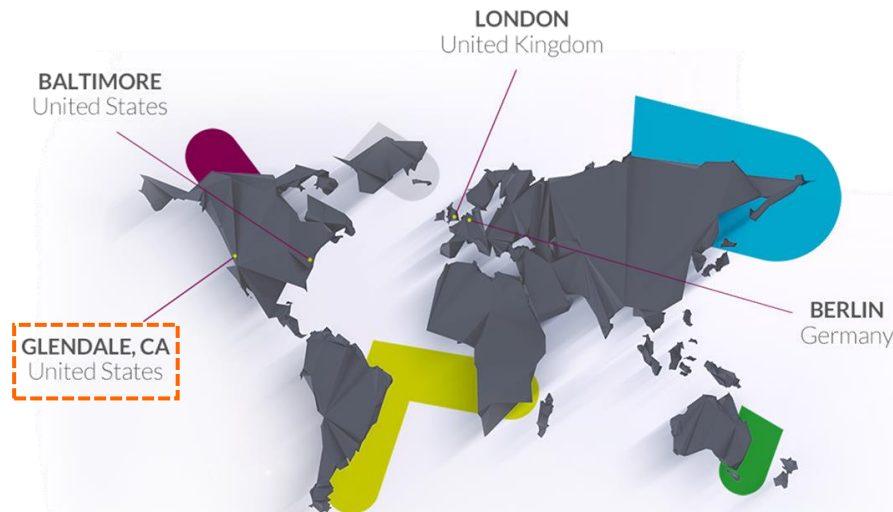
Nanotechnology is an emerging technology that has the potential for use in a broad array of FDA-regulated products, including medical products, foods and cosmetics. Nanomaterials, developed using nanotechnology, are measured in nanometers — equal to about one-billionth of a meter — so small that they cannot be seen with a regular microscope. These nanomaterials can have different chemical, physical, or biological properties than their conventionally-scaled counterpart materials used in many products regulated by FDA.



BIOGRAPHENE

# Why California?

parexel®



**Stanford Jhee, Ph.D.**  
Corporate Vice President  
*Scientific Affairs for Early Phase Development*

# Networking in California



**BIOCOM**  
accelerating life science



## Key Locations:

- San Diego (HQ)
- Los Angeles
- San Francisco

**1,300 Companies  
&  
400,000 Professionals**  
Across California

## 200 Annual Events

- General Networking
- Investor Partnering
- Advocacy Fly-Ins



**BIOGRAPHENE**

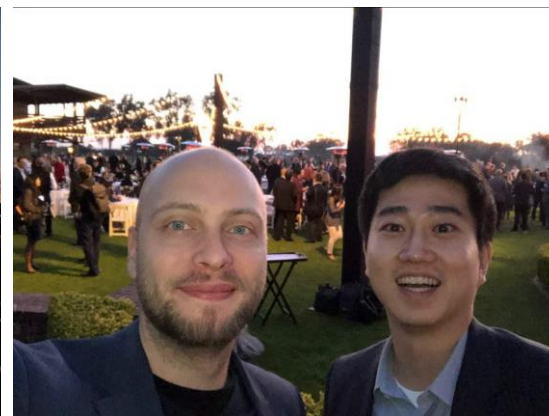
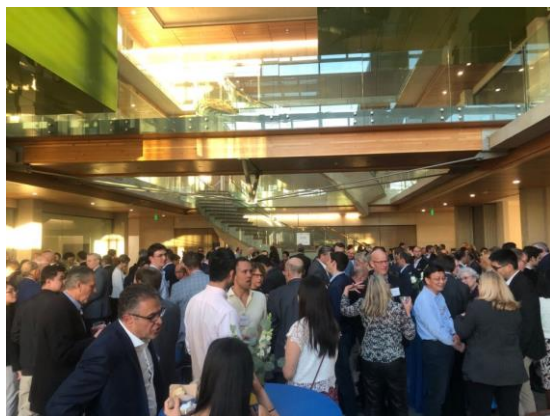
# Networking in California



BIOCOM  
GLOBAL LIFE SCIENCE  
PARTNERING  
*Conference*



FEBRUARY 25<sup>TH</sup> - FEBRUARY 27<sup>TH</sup>, 2020  
THE LODGE AT TORREY PINES  
SAN DIEGO, CALIFORNIA



**BIOGRAPHENE**

# Networking in California



## BIOCOM

BIOCOM 2020 RARE DISEASES ADVOCACY FLY-IN

MARCH 9-11, WASHINGTON D.C.

- **Janet Maynard, MD, MHS.,**  
The Office of Orphan Products and Development, **FDA**
- **Lucas Kempf, MD,**  
Rare Diseases Program, Office of New Drugs,  
Center for Drug Evaluation and Research, **FDA**
- **Eric Sid, MD, MHA,**  
Office of Rare Disease Research National Center  
for Advancing Translational Sciences, **NIH**
- **Matthew McMahon, PhD,**  
Small business Education and Entrepreneurial Development  
Office of Extramural Research, **NIH**
- **Andrew Hu, MPP,**  
Public Policy and Government Relations,  
Patient-Centered Outcomes Research Institute (**PCORI**)
- **Senator Kamala Harris**
- **Congressman Jimmy Gomez**
- **Congressman Mike Levin**
- **Congressman Scott Peters**



**BIOGRAPHENE**

Contact: [jyoo3487@bio-graphene.com](mailto:jyoo3487@bio-graphene.com)



# Networking in California



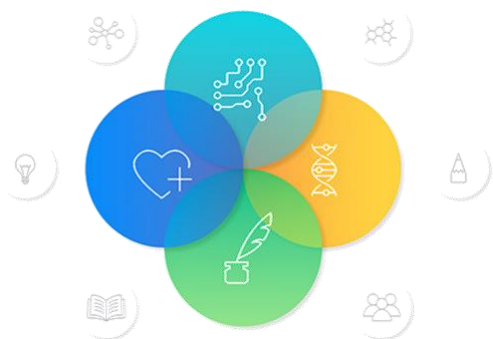
**82STARTUPS**



**BIOTECH CONNECTION**

— LOS ANGELES —

A PROJECT OF COMMUNITY PARTNERS®



Keck School of Medicine of **USC**

**MESH Academy**

Medicine, Engineering, Science and Humanities



**BIOGRAPHENE**

Contact: [jyoo3487@bio-graphene.com](mailto:jyoo3487@bio-graphene.com)

# Upsides of Los Angeles

## 1) Accessibility

Destination from ICN	Flight Time
San Francisco (SFO)	10h 30m
<b>Los Angeles (LAX)</b>	<b>11h 15m</b>
Dallas (DFW)	12h 40m
Chicago (ORD)	12h 45m
Atlanta (ATL)	13h 35m
Boston (BOS)	13h 55m
Washington D.C. (IAD)	14h 00m
New York (JFK)	14h 10m

City	Time (Zone)
Seoul	<b>10:00 AM (GMT)</b>
<b>Los Angeles</b> San Francisco	<b>6:00 PM (PDT)</b>
Dallas Chicago	8:00 PM (CDT)
Atlanta Boston Washington D.C. New York	9:00 PM (EDT)

# Upsides of Los Angeles

## 2) Familiarity



Location	Area (km <sup>2</sup> )
LA 한인타운	7.00
강남구 역삼동	3.50
용산구 이태원동	1.37

County in the United States	Korean Residents
Los Angeles County, CA	230,876
Orange County, CA	93,710
Queens County, NY	66,124
Fairfax County, VA	44,591
Honolulu County, HI	41,689
San Diego County, CA	25,387
New York County, NY	21,996

# Upsides of Los Angeles

## 3) Climate



# Upsides of Los Angeles

## 4) Entertainment

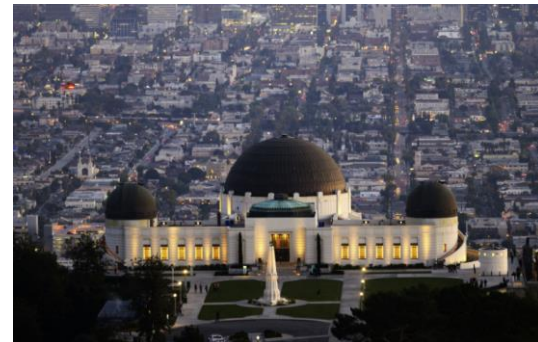
Basketball



Baseball



Soccer



Football



# Downsides of Los Angeles

## 1) Living Expenses

State	Income Tax Rate
<b>California</b>	<b>13.3%</b>
Hawaii	11.0%
Oregon	9.90%
Minnesota	9.85%
Iowa	8.98%
New Jersey	8.97%
Vermont	8.95%
Washington D.C.	8.95%
New York	8.82%
Wisconsin	7.65%

State	Sales Tax Rate
<b>California</b>	<b>7.25%</b>
Indiana	7.00%
Rhode Island	7.00%
Tennessee	7.00%
Mississippi	7.00%
Minnesota	6.88%
Nevada	6.85%
New Jersey	6.63%
Arkansas	6.50%
Kansas	6.50%

- Los Angeles ranked # 9 as the city with the highest living expenses in the United States.

# Downsides of Los Angeles

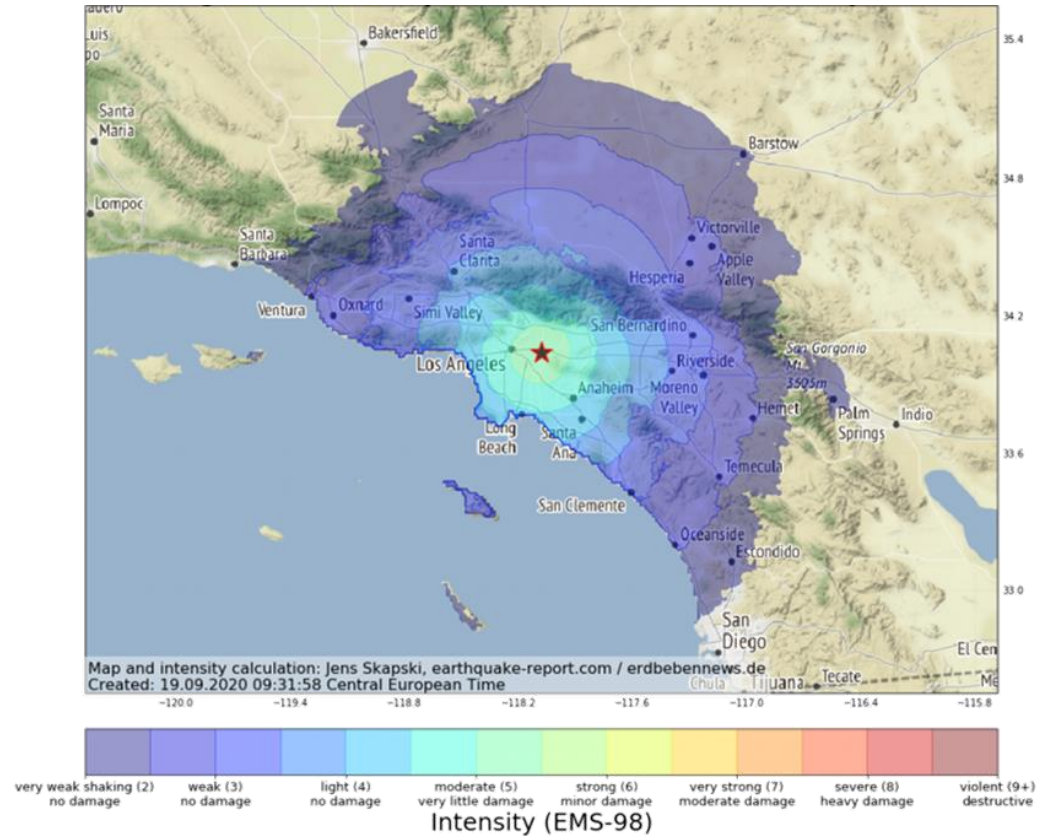
## 2) Environmental Factors

### Wildfires



**2020 Bobcat Wildfire**  
205 km<sup>2</sup> burned (Seoul: 605 km<sup>2</sup>)

### Earthquakes



**2020 Los Angeles Earthquake**  
Maximum Intensity: 5.4  
(2017 Pohang Earthquake: 5.4)

# Downsides of Los Angeles

## 3) Societal Infrastructure – Homeless Issues





# Downsides of Los Angeles

## 4) Societal Infrastructure – Transportation

### Public Transportation



### Traffic Problem



# Summary

## Major Professional Networking Opportunities in California (LA)



## Upsides and Downsides of Living in Los Angeles

Upsides of LA	Downsides of LA
<b>Accessibility</b> Travel / Time Difference	<b>Living Expenses</b> Highest Tax Rates
<b>Familiarity</b> Koreatown / Korean Residents	<b>Environmental Factors</b> Wildfire / Earthquake
<b>Climate</b> Stable Weather (Dry)	<b>Homeless Issues</b>
<b>Entertainment</b> Sports / Tour Sites	<b>Transportation</b>



# BIOGRAPHENE



**Je Min Yoo, Ph.D.**

CEO/COO

555 W 5th St. Fl35 Los Angeles, CA 90013

[jyoo3487@bio-graphene.com](mailto:jyoo3487@bio-graphene.com)

[www.bio-graphene.com](http://www.bio-graphene.com)